

قرية منخفضة التكاليف للإنتاج الغذائي

يعالج المشروع الفقر في منطقة دير علا- الملاحه، من خلال التركيز على نقاط القوة الموجودة محليا مع التوجهات العالمية للسياحة البديلة و التنمية من الاسفل . حيث يقترح المشروع الاحتفال بالثقافة الزراعية و القروية، بدمج السياحة الزراعية مع التنمية المحلية من خلال قرية صغيرة- او نواة قرية- تهدف الى اعطاء السكان المحليين مكانا لتعزيز الدخل ورفع مستوى المعيشة من خلال حلقات الإنتاج الغذائي. يتكون المشروع من مجموعة من الفضاءات الخارجية المستوحاة من جماليات عمارة القرى و التي تقدم كل منها احد مراحل التصنيع الغذائي بأسلوب شفاف يشجع السكان المحليين على الانخراط ويقدم فكرة جديدة في دمج الإنتاج الغذائي مع الاستهلاك الغذائي. يستخدم المشروع افكار الاستدامة و مبادئ العمارة الخضراء مما يميز الطروحات الجمالية ويساهم بربطها مع المكان.

DESCRIPTION

The main purpose of the design is to improve the farming & farmers culture in order to decrease the poverty in one of Jordan poverty pockets.

The design was based on how the farmers related to their lands and how they work with love with their lands, architecture & agriculture were integrated with each other in a way that gave us a new experience about the agricultural life.

Functionally the project has a big cycle (food production line), over all it has five main zones; food processing, food packaging, market, restaurant, and project base services zone, they all relate to each other. The project has two main users; farmers, and non-farmers, it aims to create a life for both users as producers (as farmers) and consumers (as non-farmers).

We will be able to see farmers working on their lands at the same moment we will be able to see people eating food produced form the farmers crops, thats how it improved the agricultural culture.

It is a low cost project, mud is the building material combined with local cane and stone.

DESIGNED

2017

COMPLETED

2017

TECHNICAL DATA

Location: Jordan - Amman - Jordan Valley - Deir Alla

Site area: 44,695 sq.

Built-up area:4,070 sq.

Design year: 2017

PROJECT TEAM

Student Name: Hiba Suheimat

Supervisor: Dr. Fatima Mayada Al-Nammari

June 18, 2017 - 04:47 / June 18, 2017 - 04:47

The project is proposed from a C.D.O. for Al-Mallaha district as one of Jordan poverty pockets

Problem Data



Follow-up target = Concept

Concept: Agricultural culture Recognition

Spreading Awareness

The culture of farming has been *marginalized* over the time more and more after the concept of capitalism. We need to *level-up* both the *farmers lifestyle* & the *farming operation*. By articulating the image of the farming lifestyle & the architectural language in their villages we will be able to send our message correctly.

Allowing the people to be apart of the food production process from A to Z will level-up the farming operation.



Solution Data

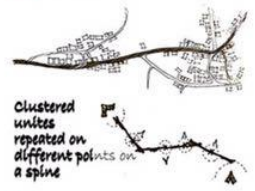
Concept Layers

Architectural layer

i Farmers life-style

ii Where they live

iii Urban scale



iii Architectural scale



ii What they do

Farmer-Land relationship

Farmers have a physical & spiritual connection with their lands as if they were humans, they feel each other.

- Earth incloses architecture
- Local earthy material
- Green building

Functional layer

i Farming operation

Having the process from A to Z

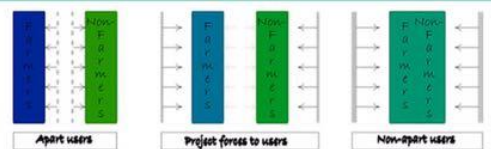


This led us to what kind of a spatial experience we might have

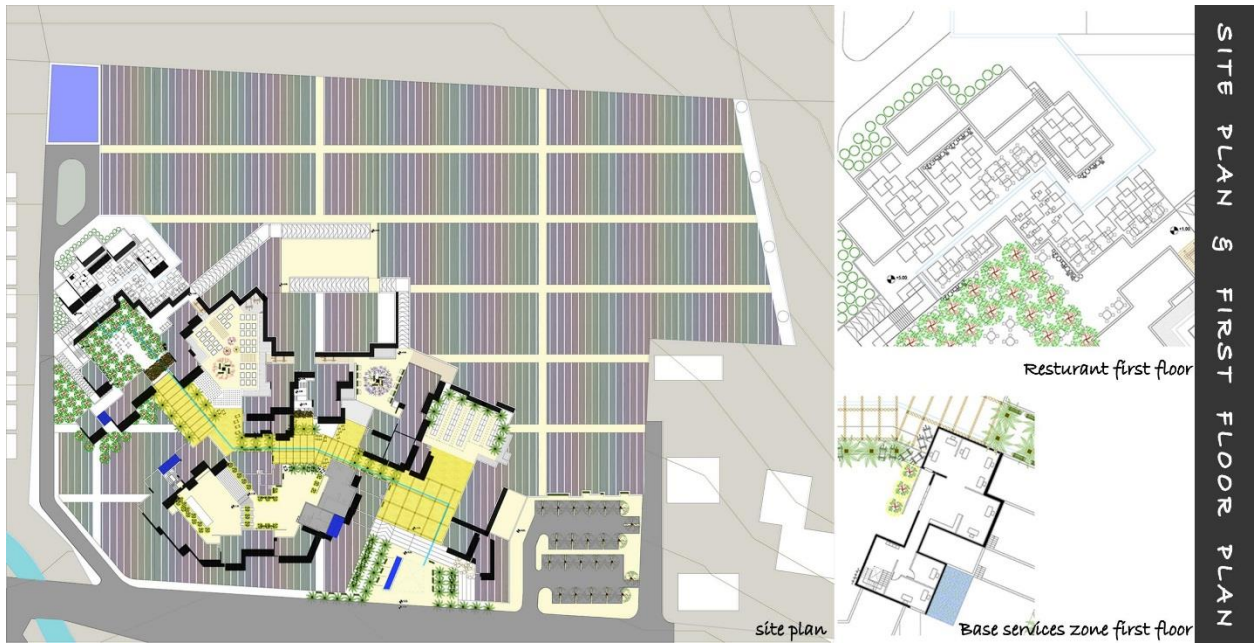
Spatial Experience

We will walk through the walls feel the beautiful tension between the masses, you will see the farmers working on their lands, at the same moment you will see people eating fresh cooked food from the same crops the farmers were working on.

Both farmers & visitors will be apart of each others life as if they were non-apart.



PROJECT DEMONSTRATION



Drying crops

- Date
- Lemon
- Watermelon
- Strawberry
- Mango
- Orange
- Corn
- Pepper
- Zucchini
- Potato

Jam crops

- Lemon
- Strawberry
- Mango
- Orange

Pickling crops

- Lemon
- Cucumber
- Pepper

Juice crops

- Date
- Lemon
- Watermelon
- Strawberry
- Mango
- Orange

Frying crops

- Corn
- Pepper
- Zucchini
- Potato

Cutting crops

- Date
- Lemon
- Watermelon
- Strawberry
- Mango
- Orange
- Corn
- Pepper
- Zucchini
- Potato

Steaming crops

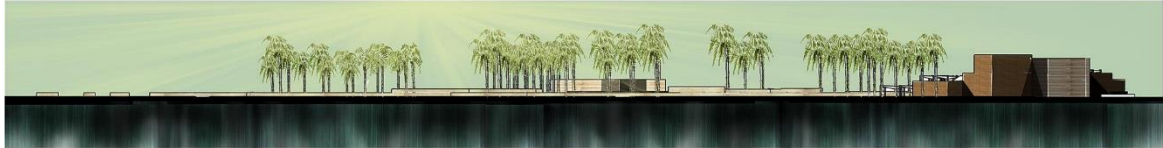
- Corn
- Pepper
- Zucchini
- Potato



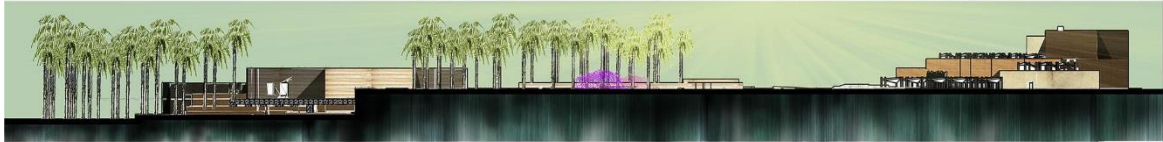
FOOD PROCESSING CYCLES & CROPS



East Elevation - facing West



West Elevation - facing East



North Elevation - facing South



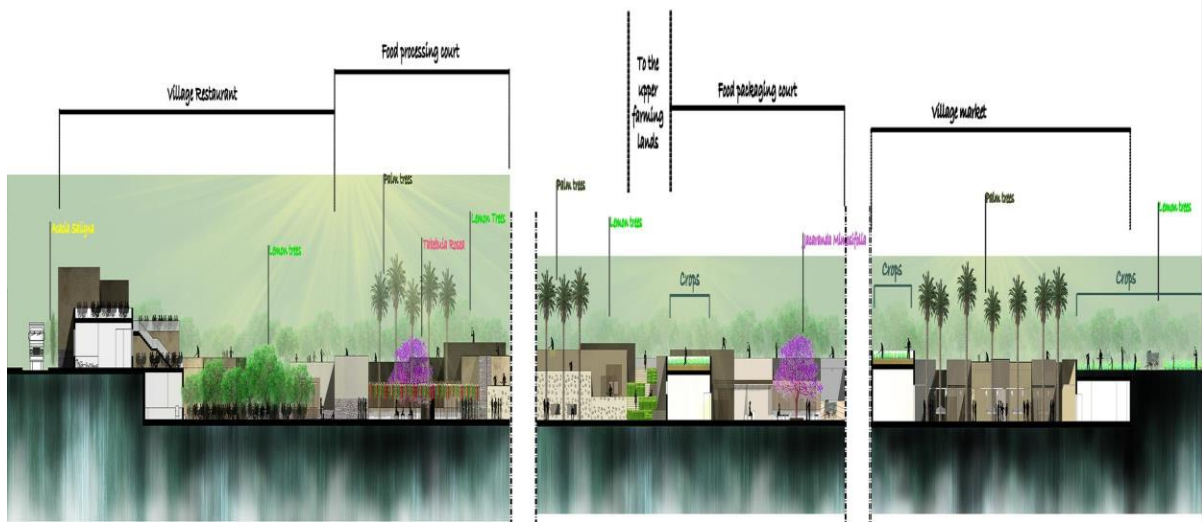
South Elevation - facing North

E
L
E
V
A
T
I
O
N
S

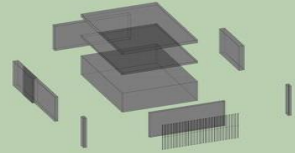


Food Processing Corridor & Court
Resting space giving them a partial privacy & dry food trays court

FARMING COMMUNITY - AFFORDABLE FOOD PRODUCTION VILLAGE



SECTION
I



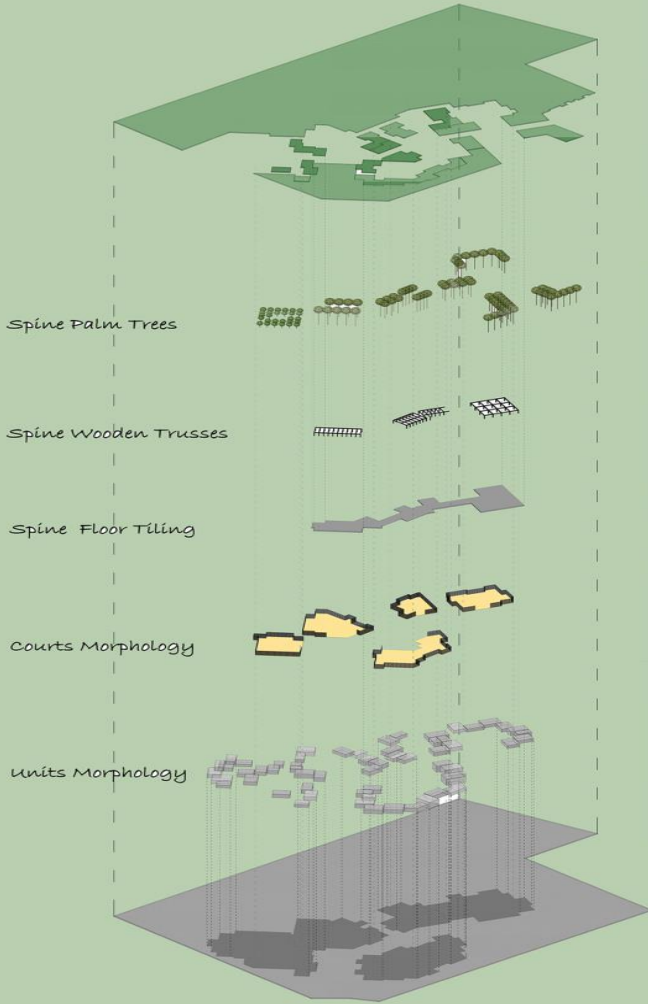
Zoning



Green Zones



Circulation



	Farmers	Non-farmers
Services zone	██████████	██████████
Restaurant	██████████	██████████
Processing	██████████	██████████
Packaging	██████████	██████████
Market	██████████	██████████
Lands	██████████	██████████



FARMING COMMUNITY - AFFORDABLE FOOD PRODUCTION VILLAGE

Food Packaging Court
People working under a jacaranda tree having an excellent space



FARMING COMMUNITY - AFFORDABLE FOOD PRODUCTION VILLAGE

Village Spine
Farmers selling on their wagons, people buying food, farmers working on their lands, & people resting inside gabion walls



It is a village that gave us an affordable rural lifestyle, defeating poverty with the ability to experience a live social farming architecture

FARMING COMMUNITY - AFFORDABLE FOOD PRODUCTION VILLAGE